

Gummi Bear May Newsletter 2026

**Center Closing at 3:00 5/22 and will be
CLOSED Monday, May 25th for Memorial
Day**



Last month the Gummi Bears spent a week talking about Spring and the weather was so nice we got to spend a lot of time outside



Standard 10.4.YT.B (Gross Motor)
Demonstrate balance and strength when performing a gross motor skill

Dear Families,

The weather is changing and we go outside twice a day, weather permitting.

Please make sure that your child's spring/summer clothes are labeled so they don't go home with the wrong family.

UPCOMING EVENTS

May 1 **Caterpillars arrive**

May 4-8 **Staff Appreciation**
Week

May 5 **National Teacher**
Day

Cinco de Mayo

May 7 **Bundt Cakes**
Delivered

May 10 **Happy Mother's**
Day

May 18 **Roslyn Library**
Storytime

May 18-22 **Update Emergency**
Contact Forms

May 19 **DAY CARE CLOSED**
/ Copper Beech Closed

May 22 **Copper Beech**
Early Dismissal

DAY CARE
CLOSING at 3:00 PM

May 25 **Closed for**
Memorial Day

June 1 **All Summer Camp**
Fees and Forms Due

POTTY TRAINING TIP OF THE MONTH:

Children tend to show various signs of being ready to potty train. Some include; Pulling at a wet or dirty diaper and/or hiding to pee or poop.

REMINDERS

Please send in spring/summer attire and an extra sweatshirt/hoodie to keep in their cubby. We go outside twice a day, weather permitting.

We do not heat food in the microwave. If you want your child to have warm food we recommend a Hot/Cold insulated thermos.

Please **LABEL** all of your child's belongings.

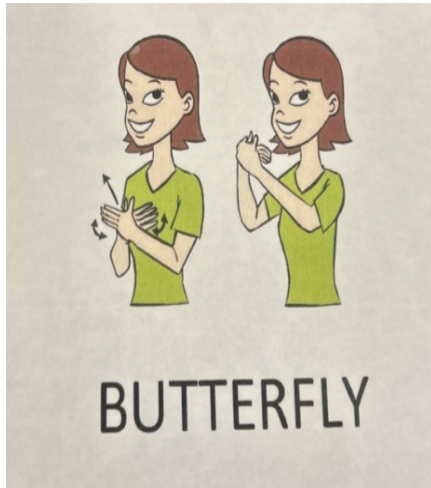
Check out **INCH BUG** for personalized labels

MAY BIRTHDAYS

1 Jackson
8 Calvin
24 Odin
24 Juliette

THEMES FOR THE MONTH

Dinosaurs
Mother's Day



Sign Language

Butterfly
Mother

BOOKS FOR THE MONTH

[Are You My Mother](#)

[10 Hooting Owls/My Little Book of ABC's](#)

[Dinosaur VS The Potty](#)

[The Shape Book](#)



Sample text 1

Center Wide News

Emergency Contact forms need to be updated during **the week of May 18th**. **Teachers will have you look at the forms we have and ask you if everything is the same. If everything is the same, you need to sign and date the form. Please only sign and date in 1 section if you are filling out a new form. If there are any changes you need to complete a new form.** You can fill out the form from the website and print it out. Please do not save it and email it. The form changes depending on your computer system if you do this. If you want a hard copy, please ask for one at drop-off or pick-up. ***It is best to type on the form, so it is legible.***

You can print the form at <https://daycarecentersinc.com/forms/>- **Any time this information changes, please complete a new form and send it in.**

HAPPY MOTHER'S DAY!

May 19 DAY CARE CLOSED / Copper Beech Closed - Primary Election Day

May 22 Copper Beech Early Dismissal

DAY CARE CLOSED at 3:00 PM for the Holiday

Weekend

May 25 Memorial Day CLOSED!

Thank you to everyone for **supporting our fundraisers! We hope you enjoy your Bundt Cakes!**

"Happy Staff Appreciation Week (May 4-8) to our all-star team! ☺ We appreciate everything you do each and every day!"

Let your child's teachers know how much you appreciate all their hard work. Teacher appreciation Day is May 5th

Summer Water Play Fun -Children will need to have a **bathing suit, water shoes, and a towel** for selected water play days. Your child's teacher will let you know when they have scheduled a water play day, so you know when to bring in their suits, towels, etc. We request that ***all girls have a 2-piece suit*** to make toileting/diaper changing easier. Please keep this in mind when shopping for bathing suits!

Please make sure **you apply sunscreen** before your child comes to school. We will reapply in the afternoon. If you are bringing in your own sunscreen, please make sure it is labeled. Make sure you sign our permission form for sunscreen; it will be in your child's classroom.

Make sure you send ice packs in your child's lunch box. We do not put items in the refrigerator. Make sure everything you bring in is labeled.

School age will be using the climber after school some days. If they are on it daycare children may not go on.

Before and After school is filling up . Please bring your paperwork in **ASAP**

All Summer camp payments must be made by June 1st.

All children must have an updated health report every 6 months until they reach 2 years of age. After age 2, health reports are required yearly until age 6, and then every 2 years after that. If a health report is not up to date, we have the right to suspend attendance until one is provided, per state regulations.

www.daycarecentersinc.com

.

Miss Flo, Miss D, Miss Dawn, Miss Mandy

GummiBearRoom@gmail.com

215-572-0862 ext 203